

W Series



High Speed CNC Spring Coiler

SIMCO

www.simcotw.com

MACHINERY DESIGN

Window based Soft. User-friendly touch screen graphical interface.
Dual screens display design with optical gauge facilitates easy monitoring of production.
Separate control unit free from machine vibration.
The arbor and upper and lower cutters are integrated into a rigid servo controlled slide.
Coils the maximum wire diameter at a spring index 3 (O.T. wire of 2000N/mm²).
Power saving design. 4 times production output with 40% less power consumption

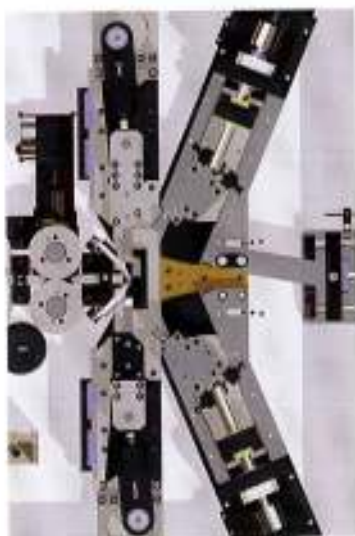


Coiling system

Rigid coiling device with a 3-axis system for fast OD setup.
Simple design of mechanical system facilitates quick shift in R/H & L/H.
Each coiling point is servo controlled and the adjust can be made by units or percentage. This is especially helpful when coiling conical or torsion springs

Cutting system

The cutter moves in synchronization with the arbor, reducing the setup time for the cutting tool.
High speed cutter. Multi-cut system - Straight / Rotary / Twist / Flying cut.
Simple mechanical design for quick changeover of different cutoff types.
Individually programmable cutting speed.



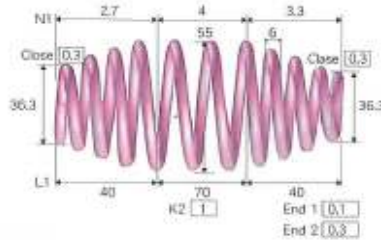
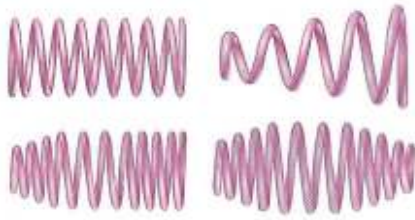
Quality Control (Optional)

Optical spring gauge for the measurement of the spring length, OD and Pitch and control.
External encoder to monitor the servo controlled wire feed.
The software continuously monitors the difference between the theoretical wire feed with the actual wire feed and can be set to automatically shutdown or notify the operator if the actual wire feed exceeds the required limits.



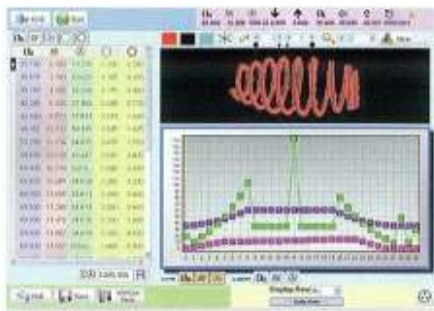
Programming

Auto program generator provides provides 12 types of spring geometries, including hour-glass and banana spring. The technician can enter the parameters of the spring and the program will be automatically generated.

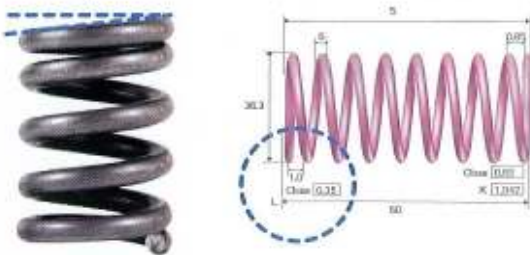


3D spring preview reduces setup time and scrap. Chart analysis for OD, Pitch and Feed.

Intuitive programming by dragging the chart dots simplifies the traditional CNC programming.



Start & End coiling angle fine tuning function.

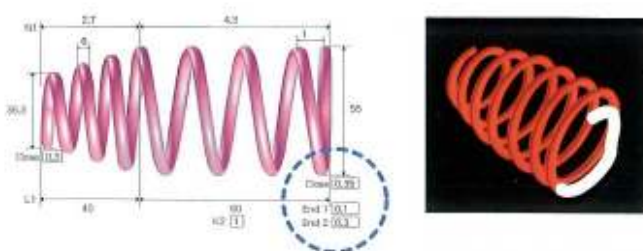


Wire feed is displayed by feed length and number of coils in the program. This feature facilitates easy adjustment of the spring free length and coil end angle.

A complete spring for trial run is not necessary.

Just check the initial and end coil with less coils of the spring body, saving the wire material.

Taper spring end coil fine tuning function.



DUROFER AG
MOOSSTRASSE 20
CH-9014 St. Gallen
SWITZERLAND

T +41 (0)71 272 23 50 / F +41 (0)71 272 23 59
info@durofer.ch / www.durofer.ch

SPECIFICATION		
Item \ Model No.	W-1045	W-1065
Wire Capacity(2000N/mm ²)	φ 1.4~ φ 4.5	φ 3.0~ φ 7.0
Max. Spring OD	80mm	120mm
Feeding Speed	80m/min	80m/min
Max. Output	800 rings/min	500 rings/min
Dimension(mm)	1930x1520x2240	2600x2100x2300
Weight(kgs)	3500	6500



SIMCO SPRING MACHINERY COMPANY

6F, No, 27, Lane 61, Sec. 1, Kwang Fu Road,
San-Chung City, Taipei, Taiwan, R.O.C.

Tel : 886-2-2995-4088 Fax : 886-2-2999-4685

E-mail : simco@simcotw.com

[http : www.simcotw.com](http://www.simcotw.com)